



**ERBA** SEA FOOD



**SEA BREAM**  
**SPARUS AURATA**



**SEA BASS**  
**DICENTRARCHUS LABRAX**

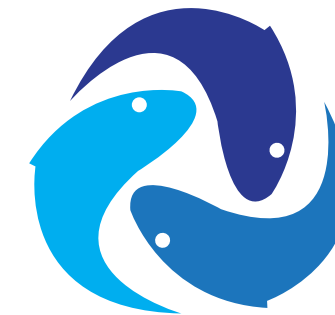


**TROUT**  
**ONCORHYNCHUS MYKISS**



**PIKE PERCH**  
**STIZOSTEDION LUCIOPERCA**





Fish have been on Earth for over 500 million years long before even the dinosaurs roamed the planet. They demonstrate a variety of sizes, shapes and diets and inhabit a range of environments and geographic locations. And exhibiting a range of diverse characteristics which makes them one of the most successful groups of animals in the aquatic environment.

With its superior biological value, containing water and fat-soluble vitamins with low carbohydrate, fat level and high mineral content has an important place in human nutrition.

We, as ERBA, provide a wide range of aquaculture products with high quality to take a place within this system of vital importance.

[www.erbseafood.com](http://www.erbseafood.com)

[www.callut.com](http://www.callut.com)





# ABOUT ERBA

ERBA SEAFOOD is the foreign trade company of CALLUT SEAFOOD in Turkey. We are one of the leading Seafood companies in aquaculture sector and one of the biggest suppliers. ERBASEAFOOD provides all kinds of fish in conformity with BRC ( British Retail Consortium) , IFS (International Food Standards), GLOBALGAP, ISO14001 , 9000, 22000 and HACCP (hazard analysis and critical control point) with its customer focused resolutions, enviroment friendly production policies.

To have the processing and packaging facility at Konya, which is supposed to be the center of Turkey geographically is a big advantage for easy supply chain management , and supply of goods. Bureau of foreign commerce is located in Izmir and this makes ERBA strong as Izmir is one the biggest port ,seaboard cities of Turkey.

ERBA SEAFOOD aims to be a leader at the foreign markets within CALLUT SEAFOOD. Fish either whole , gutted or fillet , can be provided as fresh and frozen in styrofoam boxes or frozen carton boxes. We may also provide private-labelling and customized packaging for our clients.



# ABOUT *Callut*

CALLUT SEAFOOD is established in 1999 on the area of 2000 m<sup>2</sup> with production capacity of 5mt/day and today became a factory covering an area of 12000 m<sup>2</sup> with its production capacity of 15 mt/day. CALLUT SEAFOOD provides fresh and processed fish to chain of supermarkets , educational institutions, armed services, metropolitan municipalities, industrial plants all over the country with its own vehicles. CALLUT SEAFOOD became one of the leading fish producers of Turkey with its experienced staff of production and distribution and modern manufacturing plant. 30 % of all the production is being exported to international market, primarily to European countries. And via ERBA SEAFOOD the target is to reach 70 % export of all production amount. CALLUT only cooperates with open sea farmers as an enviromental friendly company and processes these goods in conformity with BRC (British Retail Consortium), IFS (International Food Standarts), GLOBALGAP, ISO14001, 9000 , 22000 and HACCP (TSE). With its own frigorific vehicles and advantage of geographical nearness to three seas around Turkey , Callut has the advantage to provide fresh and healthy fish to all clients.

CALLUT SEAFOOD, with its foreign trade office ERBA SEAFOOD; aims to provide added value in its own name to increase export ratio.





## WHY ERBA

### Quality.

➤ Our quality assurance standards and processes are unparalleled in the industry. ERBA processes these goods in conformity with BRC (British Retail Consortium), IFS (International Food Standards), GLOBALGAP, ISO14001, ISO9000, ISO22000 and HACCP (TSE)

### Consistency.

➤ Our product specifications ensure declared weight, sizing and uniformity of usable product.

### Traceability.

➤ We require traceability all the way back to the source.

### Integrity.

➤ Our commitment to and reputation for guaranteed quality.

### Competitiveness.

➤ Our sourcing and scale enables delivery of superior products at value pricing.

### Sustainability.

➤ "Sustainable seafood" refers to the process of fresh, high-quality seafood with long-term cooperation and continuous supply guarantee to our markets, restaurants and dinner tables in a manner that protects resources and maintains natural habitats. ERBA carefully monitors fish and seafood suppliers on issues including species control, weight limits and harvesting and handling protocols.



## 71 QUALITY POLICY

As ERBA Seafood for all kinds of fish (Whole, Gutted, Fillet, Frozen, Fresh) which are being processed at CALLUT Seafood production plant;

We commit primarily :

- Hygienic production
- Conformity with food safety regulations
- Being Environment friendly, respect to consumers' rights
- Highest technology
- Continuous improvement and development for food safety
- Compliance with all standards

## OUR VALUES



### Transparency.

➤ We act in line with our principles of openness, accountability and responsibility.

### Trustworthiness.

➤ With the approach of mutual trust in all services and transactions, we share clear, precise and accurate information.

### Reputation.

➤ We care about corporate reputation and relations, striving to become the leading company and setting an example for the sector.

### Respect to People and Labor.

➤ Our employees and clients are our priority; we respect human rights, workforce and fundamental values.

### Investing in the Future.

➤ We invest in the future to achieve our goals and attain long-lasting success.

### Success and Result-Oriented.

➤ We offer quality and fast solutions, and provide innovative approaches focusing on the results.

### Social and Environmental Responsibility.

➤ We act responsibly towards society and environment, protecting the values of humanity.





**SEA BREAM**  
**SPARUS AURATA**





SEA BREAM

SPARUS AURATA

Fish can be graded at any desired weight and freshly packed. Seabream is mainly found in Mediterranean and Aegean Seas whereas can be also seen in Marmara Sea. Average length is 25-35 cm and weight 0,5-3 Kg. It is rarely found as 60 cm and 6 kg. Seabream can eat small crusts, fish and other animals with its strong chin. As it is an sarcophagous fish seabream's meat is less bony, white and very tasty. Moreover,due to the production availability it is one of the most valuable fish.



WHOLE (FRESH AND CHILLED) SEA BREAM

SIZE	200/300, 300/400, 400/600, 600/800, 800/1000
GLAZING	% 0-20
SPECIFICATIONS	Fresh Chilled / Frozen
PACKAGE	Styrofoam / Boxes
WEIGHT	5 kgs / 10 kgs



PBO SEABREAM FILLETS

SIZE	50-75, 75-100, 100-140, 140-180
GLAZING	% 0-20
SPECIFICATIONS	Fresh Chilled / Frozen
PACKAGE	Styrofoam / Boxes
WEIGHT	5 kgs / 10 kgs (500 gr and 1000 gr inner bag packed)



GUTTED DESCALED (G&D)

SIZE	200/300, 300/400, 400/600, 600/800, 800/1000
GLAZING	% 0-20
SPECIFICATIONS	Fresh Chilled / Frozen
PACKAGE	Styrofoam / Boxes
WEIGHT	5 kgs / 10 kgs (500 gr and 1000 gr inner bag packed)



V-CUT SEABREAM FILLETS

SIZE	50-75, 75-100, 100-140, 140-180
GLAZING	% 0-20
SPECIFICATIONS	Fresh Chilled / Frozen
PACKAGE	Styrofoam / Boxes
WEIGHT	5 kgs / 10 kgs (500 gr and 1000 gr inner bag packed)



PBI SEABREAM FILLETS

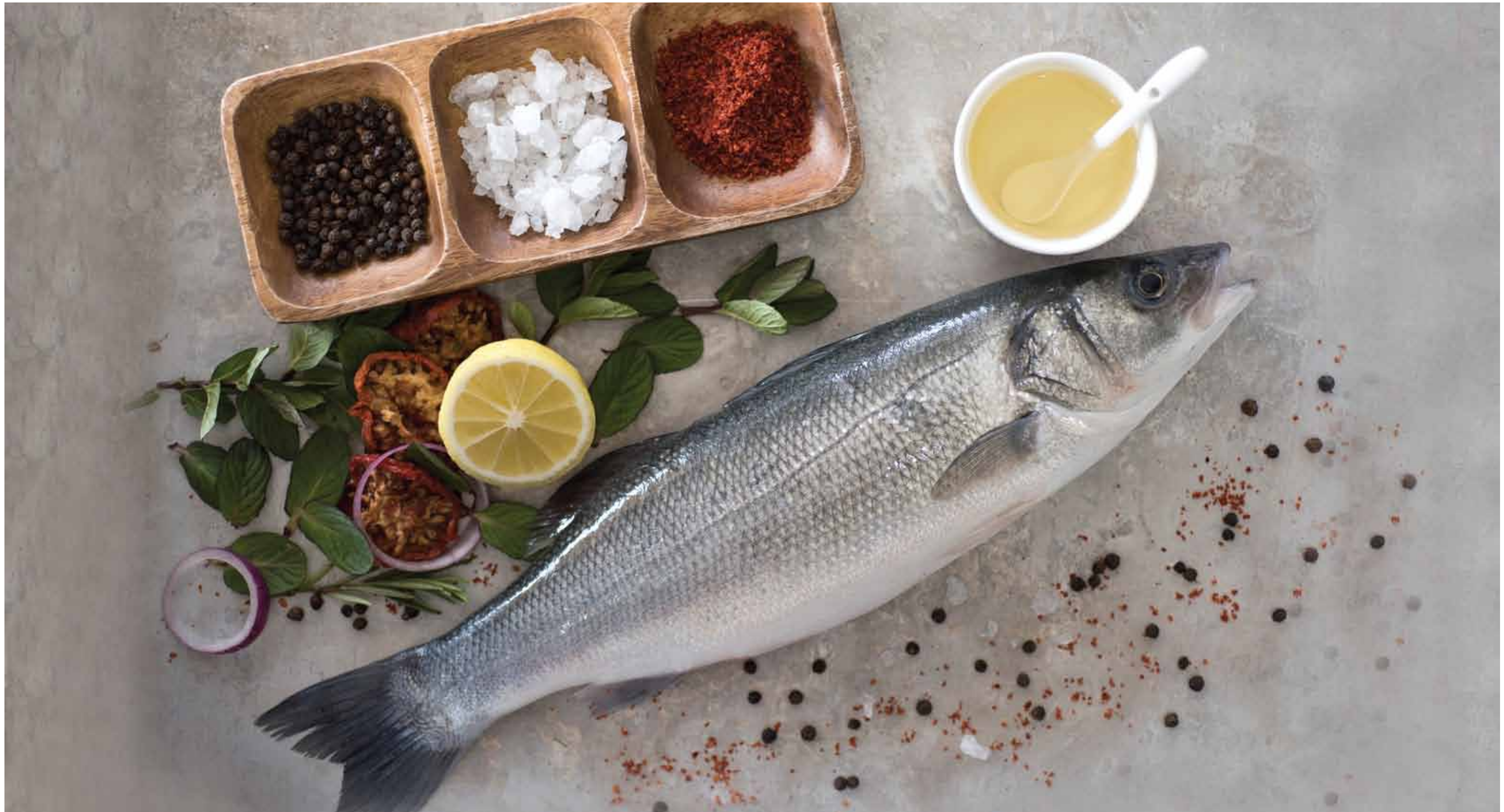
SIZE	50-75, 75-100, 100-140, 140-180
GLAZING	% 0-20
SPECIFICATIONS	Fresh Chilled / Frozen
PACKAGE	Styrofoam / Boxes
WEIGHT	5 kgs / 10 kgs (500 gr and 1000 gr inner bag packed)



SEABREAM TWIN FILLETS (BUTTERFLY)

SIZE	100-150, 150-200, 200-280, 280-360
GLAZING	% 0-20
SPECIFICATIONS	Fresh Chilled / Frozen
PACKAGE	Styrofoam / Boxes
WEIGHT	5 kgs / 10 kgs (500 gr and 1000 gr inner bag packed)







SEA BASS

DICENTRARCHUS LABRAX

Fish can be graded at any desired weight and freshly packed. Sea bass is mainly found in Atlantic Ocean, Black Sea and Mediterre-  
nean Sea. Seabass has an average length of 40-100cm. Its weight is approximately 8-10 kg and is a predatory fish. It can be  
mixed up with trout due to its black spots. Seabass has delicious and lean meat. It is used to live in warm, cold waters and is a  
strong , agile fish.



WHOLE (FRESH AND CHILLED) SEA BASS

SIZE	200/300, 300/400, 400/600, 600/800, 800/1000
GLAZING	% 0-20
SPECIFICATIONS	Fresh Chilled / Frozen
PACKAGE	Styrofoam / Boxes
WEIGHT	5 kgs / 10 kgs



GUTTED DESCALED SEABASS (G&D)

SIZE	200/300, 300/400, 400/600, 600/800, 800/1000
GLAZING	% 0-20
SPECIFICATIONS	Fresh Chilled / Frozen
PACKAGE	Styrofoam / Boxes
WEIGHT	5 kgs / 10 kgs (500 gr and 1000 gr inner bag packed)



PBI SEABASS FILLETS

SIZE	50-75, 75-100, 100-140, 140-180
GLAZING	% 0-20
SPECIFICATIONS	Fresh Chilled / Frozen
PACKAGE	Styrofoam / Boxes
WEIGHT	5 kgs / 10 kgs (500 gr and 1000 gr inner bag packed)



PBO SEABASS FILLETS

SIZE	50-75, 75-100, 100-140, 140-180
GLAZING	% 0-20
SPECIFICATIONS	Fresh Chilled / Frozen
PACKAGE	Styrofoam / Boxes
WEIGHT	5 kgs / 10 kgs (500 gr and 1000 gr inner bag packed)



V-CUT SEABASS FILLETS

SIZE	50-75, 75-100, 100-140, 140-180
GLAZING	% 0-20
SPECIFICATIONS	Fresh Chilled / Frozen
PACKAGE	Styrofoam / Boxes
WEIGHT	5 kgs / 10 kgs (500 gr and 1000 gr inner bag packed)



STOMACH CUT SEABASS BUTTERFLY

SIZE	200/300 ,300/400,400/600,600/800
GLAZING	% 0-20
SPECIFICATIONS	Fresh Chilled / Frozen
PACKAGE	Styrofoam / Boxes
WEIGHT	5 kgs / 10 kgs (500 gr and 1000 gr inner bag packed)



FROZEN SEABASS SKEWER

SIZE	100-250 gr /st
PACKAGE	Retail Box
WEIGHT	2,5 kgs / 10 kgs



## TROUT

### ONCORHYNCHUS MYKISS





TROUT

ONCORHYNCHUS MYKISS

Rainbow trout (Oncorhynchus Mykiss) lives in clean ,deep , cold sea and fresh water near pebble stones.



GUTTED RAINBOW TROUT (G&D)	
SIZE	150/200, 200/250,250/300,300/350, 350/400, 400/+
GLAZING	% 0-20
SPECIFICATIONS	Fresh Chilled / Frozen
PACKAGE	Styrofoam / Boxes
WEIGHT	5 kgs / 10 kgs (500 gr and 1000 gr inner bag packed)



DEBONED RAINBOW TROUT	
SIZE	150/200, 200/250, 250/300
GLAZING	% 0-20
SPECIFICATIONS	Fresh Chilled / Frozen
PACKAGE	Styrofoam / Boxes
WEIGHT	5 kgs / 10 kgs (500 gr and 1000 gr inner bag packed)



RAINBOW TROUT FILLETS	
SIZE	50-75, 75-100, 100-140, 140-180
GLAZING	% 0-20
SPECIFICATIONS	Fresh Chilled / Frozen
PACKAGE	Styrofoam / Boxes
WEIGHT	5 kgs / 10 kgs (500 gr and 1000 gr inner bag packed)



RED TROUT	
SIZE	50-75, 75-100, 100-140, 140-180, 180-220 / +
GLAZING	% 0-20
SPECIFICATIONS	Fresh Chilled / Frozen
PACKAGE	Styrofoam / Boxes
WEIGHT	5 kgs / 10 kgs (500 gr and 1000 gr inner bag packed)

PIKE PERCH

STIZOSTEDION LUCIOPERCA

Sander , latin name Stizostedion lucioperca is a genius of fish in the Percidae (perch) family. They are also known as "pike-perch". Average weight is between 12 – 19 kg and length reaches 1,25 meter. It has green like, silver colour on the back and also some shades of Brown , less bony and white meat.



SANDERFISH FILLETS	
SIZE	10/20, 20/40, 40/70, 70/120, 120/170, 170/220, 220/+
GLAZING	% 0-20
SPECIFICATIONS	Fresh Chilled / Frozen
PACKAGE	Styrofoam / Boxes
WEIGHT	5 kgs / 10 kgs







**ERBA** SEA FOOD

[www.callut.com](http://www.callut.com)

**FACILITY**

Tolca Köyü Höyük 42690 Konya / TÜRKİYE

P. +90 332 547 4392

F. +90 332 547 4505

[www.erbbaseafood.com](http://www.erbbaseafood.com)

**FOREIGN TRADE OFFICE**

Folkart Towers A Kule

Manas Bulvarı Adalet Mahallesi N.47 D.2608

Bayraklı, İzmir / TÜRKİYE

P. +90 232 502 0042

F. +90 232 502 0052

